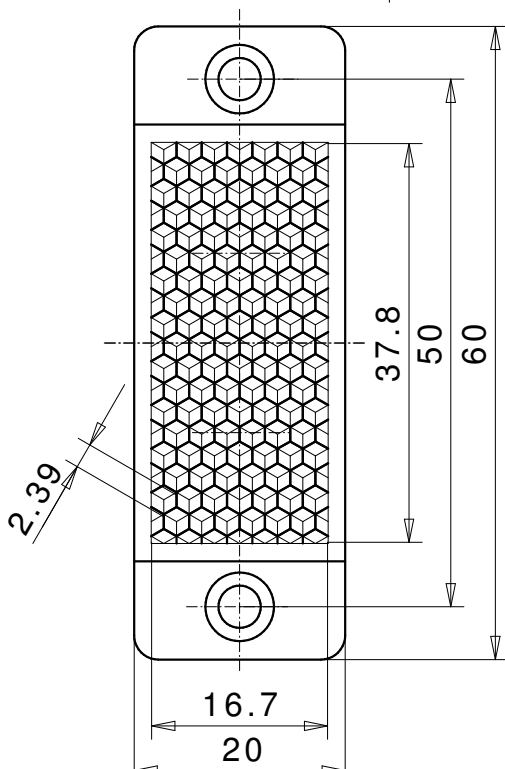
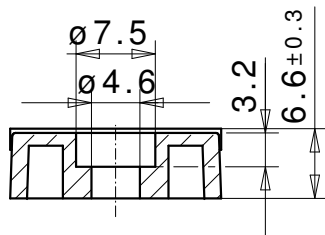


Reflector for photoelectric sensor 20x40 LH chem ZSB



REFLECTOR DATA

Application	Reflector for photoelectric sensor
Item	20x40 LH chem ZSB
Item no.	07332510

TECHNICAL SPECIFICATIONS

Shape	angular
Size (LxWxH)	60x20x6,6 mm
Reflective size (LxW)	37,8x16,7 mm
Tolerance	TG5 [DIN 16742]
Mounting	to be screwed
Chemical resistance	increased chemical resistance
Protection	IP68
Operating temp.	-20°C to +65°C
Surface	Standard
Optical structure	hexagonal
Optic size	Standard triple SW2,3
Polarizing rotation	yes
Application	Standard sensors

MATERIAL DATA

Material reflector	PET clear
Material bracket	PET red

DESCRIPTION

Due to the material used, our CHEM plastic reflectors are resistant to many chemicals that conventional reflectors are not resistant to. This provides longer life in critical applications and lowers operating costs as these reflectors are less expensive than other CHEM reflectors. The Chem reflectors are ECOLAB certified