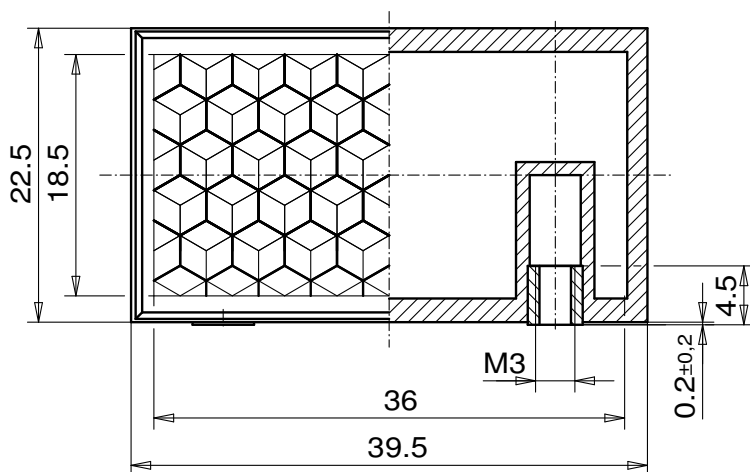
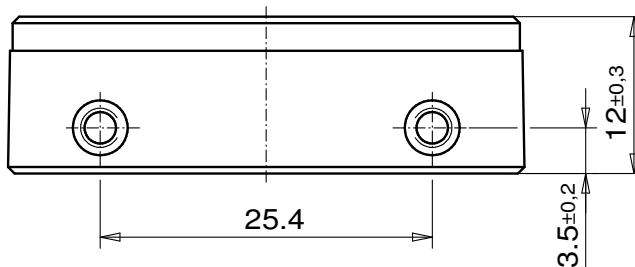


## Reflector for photoelectric sensor 23,5x40 LF M3 ZSB



### REFLECTOR DATA

Application	Reflector for photoelectric sensor
Item	23,5x40 LF M3 ZSB
Item no.	16092591

### TECHNICAL SPECIFICATIONS

Shape	angular
Size (LxWxH)	39,5x22,5x12 mm
Reflective size (LxW)	36x18,5 mm
Tolerance	TG5 [DIN 16742]
Mounting	Threaded insert M3, 1.4301
Chemical resistance	Standard
Protection	IP65
Operating temp.	-20°C to +65°C
Surface	Standard
Optical structure	hexagonal
Optic size	Standard triple SW4
Polarizing rotation	yes
Application	Standard sensors

### MATERIAL DATA

Material reflector	PMMA clear
Material bracket	PMMA high impact black

### DESCRIPTION

The standard reflectors have highest reflection values and ranges. These reflectors are best suited for applications with standard sensors.