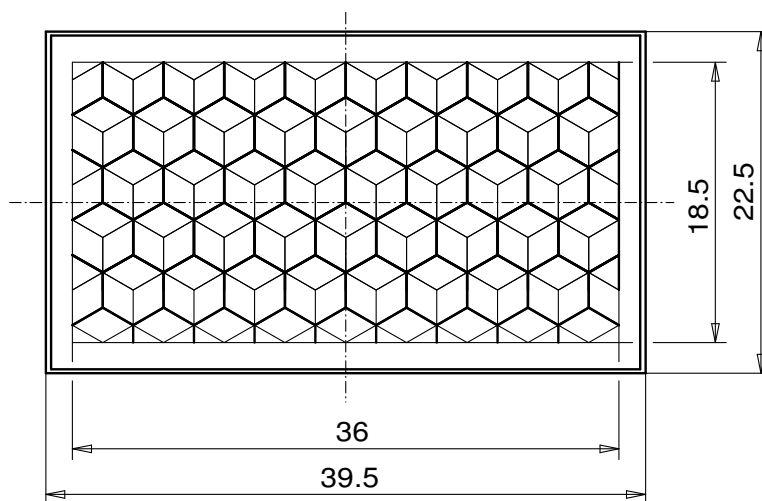
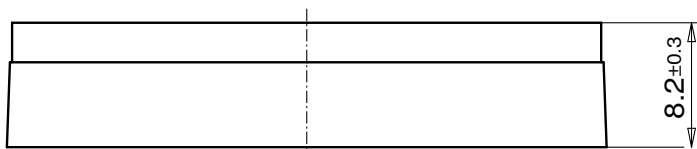


Reflector for photoelectric sensor

23,5x40 LF ZSB



REFLECTOR DATA

| | |
|-------------|------------------------------------|
| Application | Reflector for photoelectric sensor |
| Item | 23,5x40 LF ZSB |
| Item no. | 05082510 |

TECHNICAL SPECIFICATIONS

| | |
|-----------------------|----------------------------|
| Shape | angular |
| Size (LxWxH) | 39,5x22,5x8,2 mm |
| Reflective size (LxW) | 36x18,5 mm |
| Tolerance | TG5 [DIN 16742] |
| Mounting | to be glued (without tape) |
| Chemical resistance | Standard |
| Protection | IP68 |
| Operating temp. | -20°C to +65°C |
| Surface | Standard |
| Optical structure | hexagonal |
| Optic size | Standard triple SW4 |
| Polarizing rotation | yes |
| Application | Standard sensors |

MATERIAL DATA

| | |
|--------------------|------------------------|
| Material reflector | PMMA clear |
| Material bracket | PMMA high impact white |

DESCRIPTION

The standard reflectors have highest reflection values and ranges. These reflectors are best suited for applications with standard sensors.