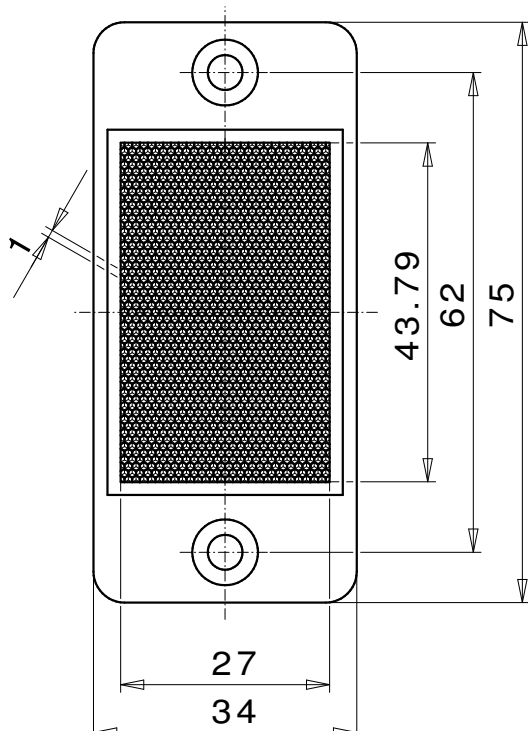
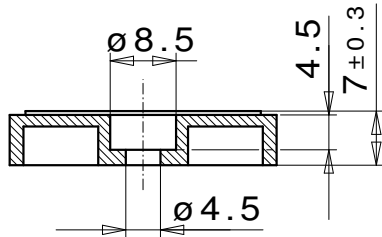


# Reflector for photoelectric sensor 30x50 LHM ZSB



## REFLECTOR DATA

Application	Reflector for photoelectric sensor
Item	30x50 LHM ZSB
Item no.	05362510

## TECHNICAL SPECIFICATIONS

Shape	angular
Size (LxWxH)	75x34x7 mm
Reflective size (LxW)	43,79x27 mm
Tolerance	TG5 [DIN 16742]
Mounting	to be screwed
Chemical resistance	Standard
Protection	IP68
Operating temp.	-20°C to +65°C
Surface	Standard
Optical structure	hexagonal
Optic size	fine triple SW1,3
Polarizing rotation	yes
Application	Standard sensors / laser photo-electric sensors

## MATERIAL DATA

Material reflector	PMMA clear
Material bracket	PMMA high impact white

## DESCRIPTION

The fine structured reflectors are particularly suitable for laser sensors with a very small light beam. In case of small movements, reflectors with large prisms can cause interruptions. The fine structured reflectors consist of many microstructured prisms, which guarantee a reliable and constant response.