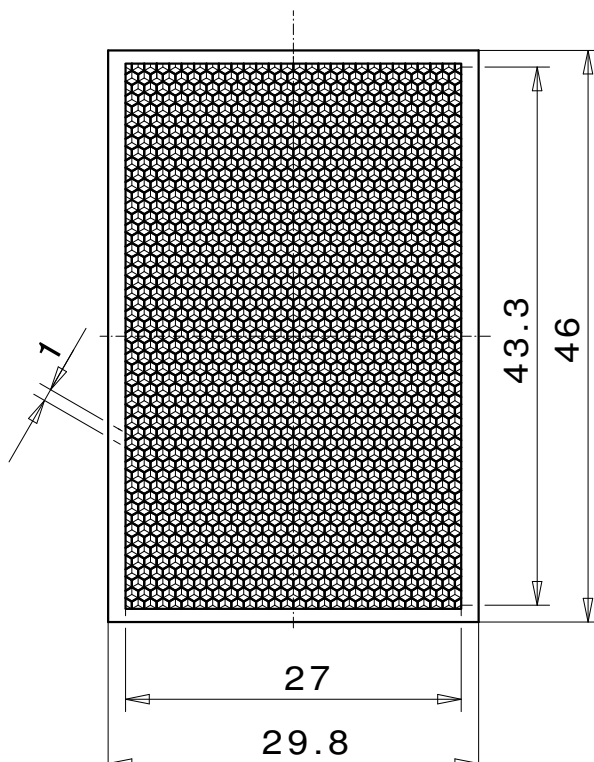
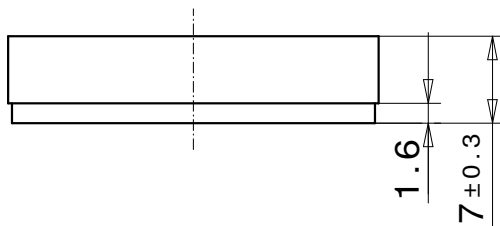
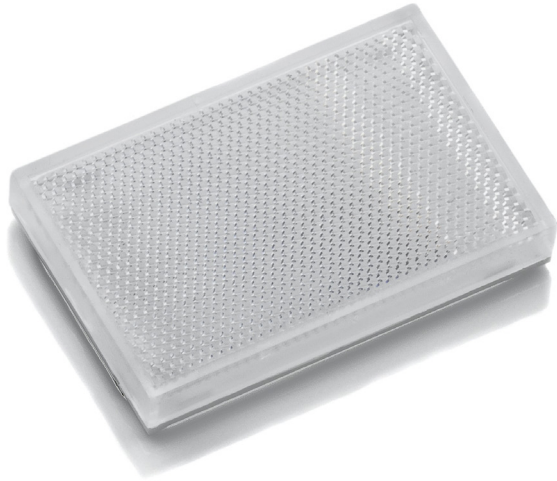


Reflector for photoelectric sensor 30x50 LM ZSB



REFLECTOR DATA

Application	Reflector for photoelectric sensor
Item	30x50 LM ZSB
Item no.	05832511

TECHNICAL SPECIFICATIONS

Shape	angular
Size (LxWxH)	46x29,8x5 mm
Reflective size (LxW)	43,3x27 mm
Tolerance	TG5 [DIN 16742]
Mounting	to be glued (without tape)
Chemical resistance	Standard
Protection	IP68
Operating temp.	-20°C to +65°C
Surface	Standard
Optical structure	hexagonal
Optic size	fine triple SW1,2
Polarizing rotation	yes
Application	Standard sensors / laser photo-electric sensors

MATERIAL DATA

Material reflector	PMMA glasklar
Material bracket	PMMA schlagzäh weiß

DESCRIPTION

The fine structured reflectors are particularly suitable for laser sensors with a very small light beam. In case of small movements, reflectors with large prisms can cause interruptions. The fine structured reflectors consist of many microstructured prisms, which guarantee a reliable and constant response.