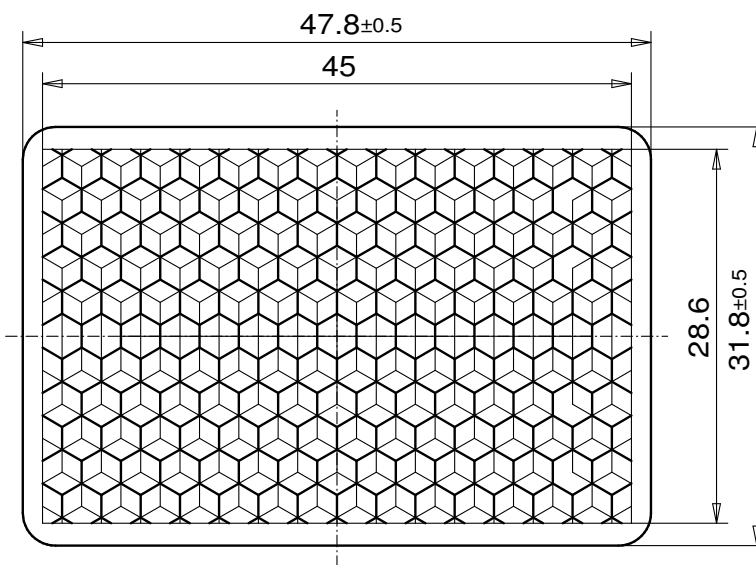
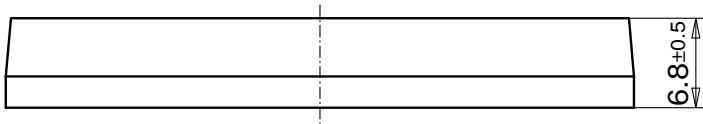


Reflector for photoelectric sensor 31x46 L



REFLECTOR DATA

Application	Reflector for photoelectric sensor
Item	31x46 L
Item no.	80092510

TECHNICAL SPECIFICATIONS

Shape	angular
Size (LxWxH)	47,8x31,8x6,8 mm
Reflective size (LxW)	45x28,6 mm
Tolerance	TG5 [DIN 16742]
Mounting	to be glued (without tape)
Chemical resistance	Standard
Protection	IP68
Operating temp.	-20°C to +65°C
Surface	Standard
Optical structure	hexagonal
Optic size	Standard triple SW3
Polarizing rotation	yes
Application	Standard sensors

MATERIAL DATA

Material reflector	PMMA clear
Material bracket	PMMA high impact white

DESCRIPTION

The standard reflectors have highest reflection values and ranges. These reflectors are best suited for applications with standard sensors.