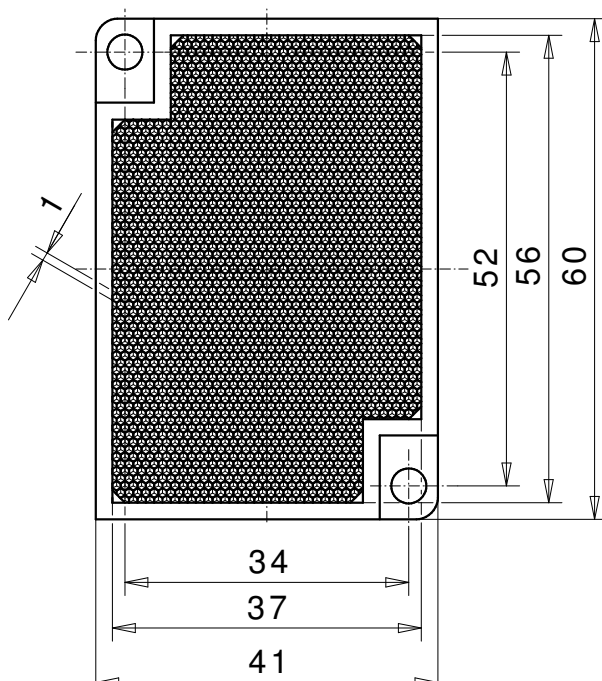
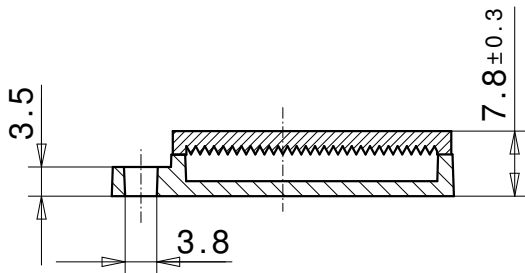
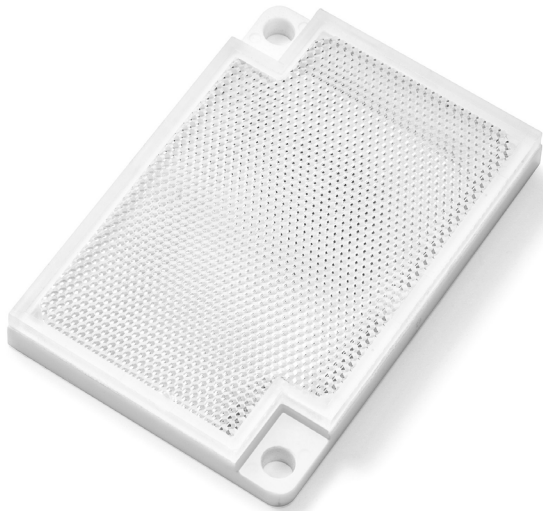


## Reflector for photoelectric sensor 41x60 LSM ZSB



### REFLECTOR DATA

Application	Reflector for photoelectric sensor
Item	41x60 LSM ZSB
Item no.	05292511

### TECHNICAL SPECIFICATIONS

Shape	angular
Size (LxWxH)	60x41x7,8 mm
Reflective size (LxW)	56x37 mm
Tolerance	TG5 [DIN 16742]
Mounting	to be screwed
Chemical resistance	Standard
Protection	IP68
Operating temp.	-20°C to +65°C
Surface	Standard
Optical structure	hexagonal
Optic size	fine triple SW1,2
Polarizing rotation	yes
Application	Standard sensors / laser photoelectric sensors

### MATERIAL DATA

Material reflector	PMMA clear
Material bracket	PMMA high impact white

### DESCRIPTION

The fine structured reflectors are particularly suitable for laser sensors with a very small light beam. In case of small movements, reflectors with large prisms can cause interruptions. The fine structured reflectors consist of many microstructured prisms, which guarantee a reliable and constant response.