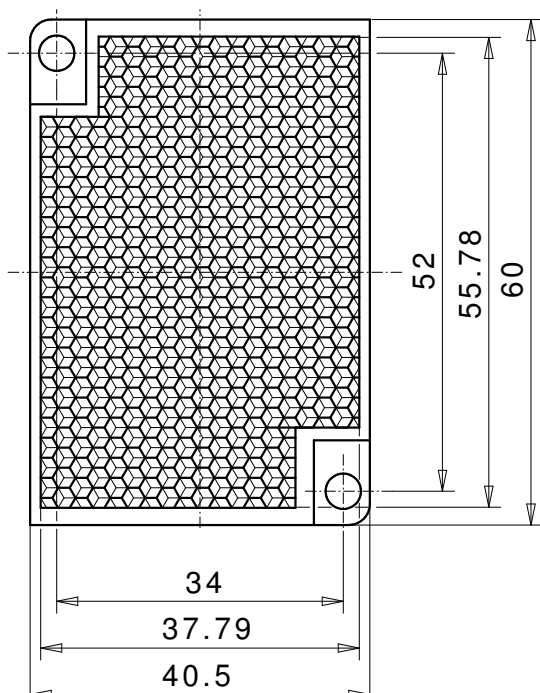
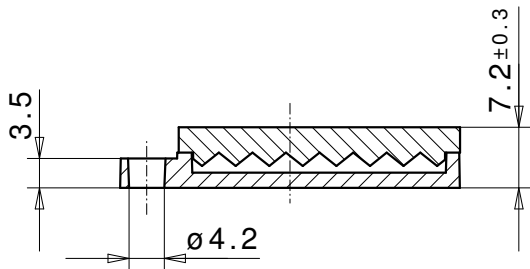


# Reflector for photoelectric sensor 41x60 LS SW2,3 ZSB



## REFLECTOR DATA

Application	Reflector for photoelectric sensor
Item	41x60 LS SW2,3 ZSB
Item no.	11322510

## TECHNICAL SPECIFICATIONS

Shape	angular
Size (LxWxH)	60x40,5x7,2 mm
Reflective size (LxW)	55,8x37,8 mm
Tolerance	TG5 [DIN 16742]
Mounting	to be screwed
Chemical resistance	Standard
Protection	IP68
Operating temp.	-20°C to +65°C
Surface	Standard
Optical structure	hexagonal
Optic size	Standard triple SW2,3
Polarizing rotation	yes
Application	Standard sensors

## MATERIAL DATA

Material reflector	PMMA clear
Material bracket	PMMA high impact white

## DESCRIPTION

The standard reflectors have highest reflection values and ranges. These reflectors are best suited for applications with standard sensors.