

Reflector for photoelectric sensor

SW52 ZSB

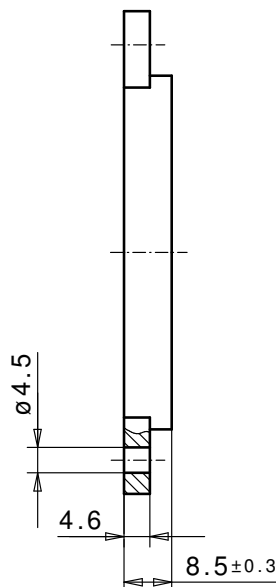
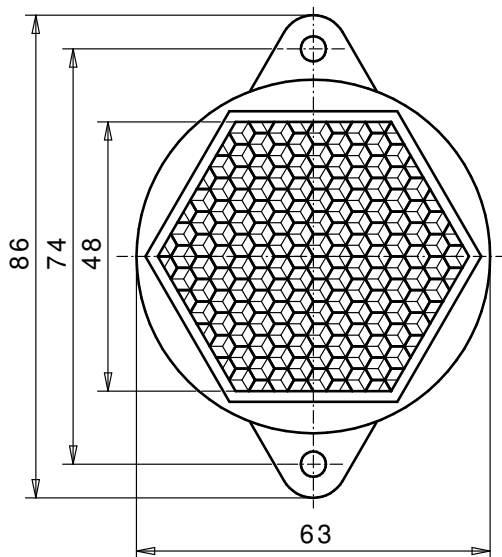


REFLECTOR DATA

Application	Reflector for photoelectric sensor
Item	SW52 ZSB
Item no.	02382515

TECHNICAL SPECIFICATIONS

Shape	round
Size(ØxHeight)	63x8,5 mm
Reflective size (Ø)	SW48mm
Tolerance	TG5 [DIN 16742]
Mounting	to be screwed
Chemical resistance	Standard
Protection	IP68
Operating temp.	-20°C to +65°C
Surface	Standard
Optical structure	hexagonal
Optic size	Standard triple SW4
Polarizing rotation	yes
Application	Standard sensors



MATERIAL DATA

Material reflector	PMMA clear
Material bracket	ABS white

DESCRIPTION

The standard reflectors have highest reflection values and ranges. These reflectors are best suited for applications with standard sensors.